

## How to connect an Epson Parallel Printer

Overview  
Installing Adapter  
Connecting the Cable  
Checking Adapter Settings  
Configuring Printer  
Installing Driver  
Troubleshooting



### Overview

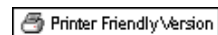
A parallel connection is one of the most common type of connection between the computer and a POS printer. The data cable connects the parallel port on the computer to the parallel adapter card on the printer.

### Required Components

- Epson POS Printer with Connect-It parallel adapter (UB-P02II or equivalent)
- Windows computer with parallel port

### Epson Printers Covered

- TM-T88II
- TM-T88III
- TM-T88IV
- TM-T88V
- TM-U200
- TM-U220
- TM-U230
- TM-U590
- TM-U675
- TM-H6000III



### Installing and Setting the Connect-It Parallel Adapter

Install the Connect-It parallel adapter into the Epson TM series printer



The parallel adapter is held in place by 2 screws.

### Attaching the Cable

Use a standard parallel printer cable to connect the printer. One end has a male DB-25 connector, the other end has a male Centronics plug.

DB25 Female (computer connector)



Centronics (printer connector end)



Centronics (printer cable end)



### Configuring the Computer

Verify the parallel port you are using by locating and checking the port in the Device Manager under the System applet in the Windows Control Panel.

---

### Running the Self Test - Test printer and show settings

Get the initial settings of the parallel adapter by running the printer's self test. To do this hold down the feed button while turning on the printer. The printer will print a list of initial settings including interface type and buffer capacity. Verify that the interface is "Parallel"

You can change the interface settings using the DIP switches on the bottom of the printer. See the support page for the model of printer you are using.

---

### Installing the Device Drivers for Windows

To obtain the latest Device Drivers from Epson:

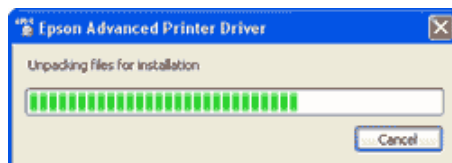
1. Download and Install Epson's drivers available from [www.pos.epson.com](http://www.pos.epson.com)
2. Click on **TECHNICAL RESOURCES**
3. Select the printer model under the menu
4. Click the **download drivers on the printer page**
5. **For detailed installation instructions, click here.**

---

### Configuring the Printer in Windows

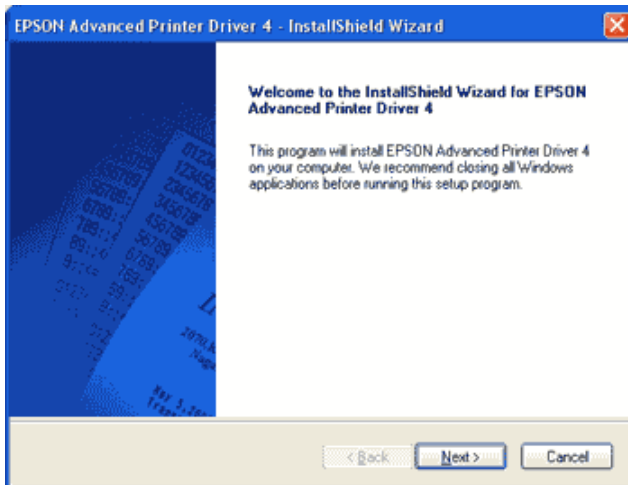
First off, the parallel printer adapter may not be plug and play. This depends on the Epson printer and the version of the interface you are using.

Installing the Epson Printer Drivers in Windows



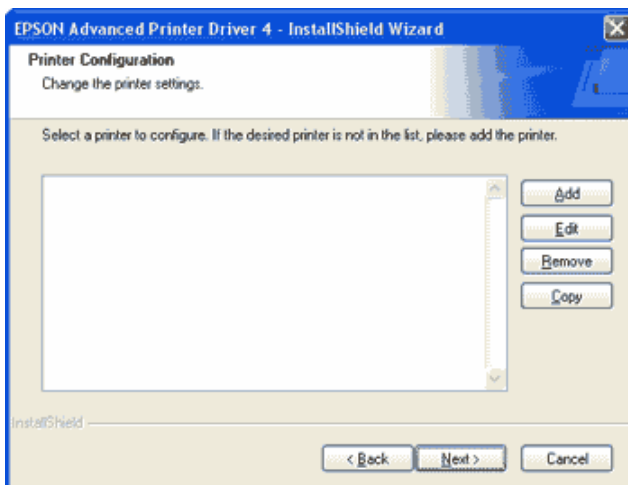
Unpacking the Drivers

After downloading the driver installer from Epson, the drivers need to be unpacked before the installer can run.



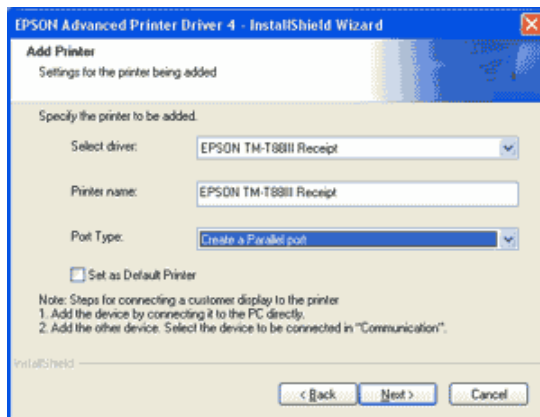
Starting the Installation

The installer walks you through selecting the model and interface you are installing drivers for in Windows.



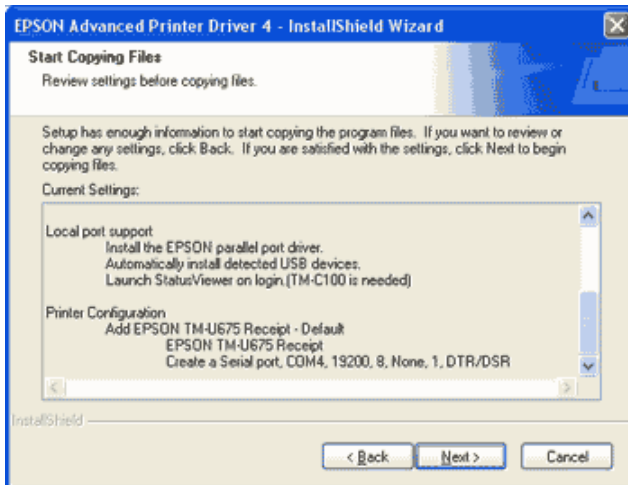
Add the Parallel Printer

Press the 'Add' button to add the new printer to Windows.



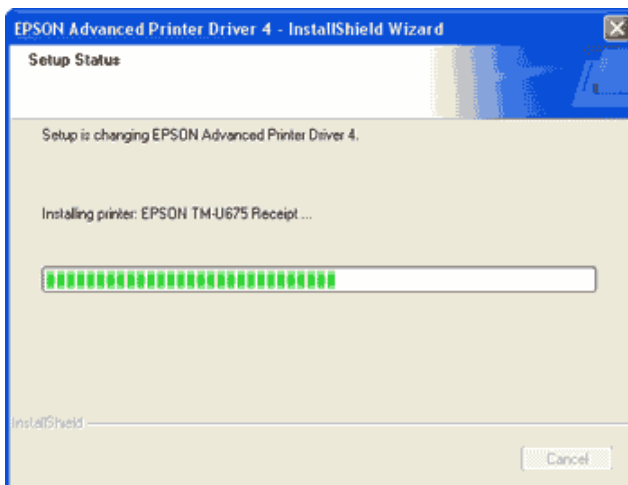
Selecting the Printer and the Printer Port

Choose the Epson model of the printer installed from the pull-down menu and choose the type of interface in use (Parallel) for the port type.



Installing the Driver Files

The installer will summarize the drivers selected. You can back up and change the driver here, if necessary.

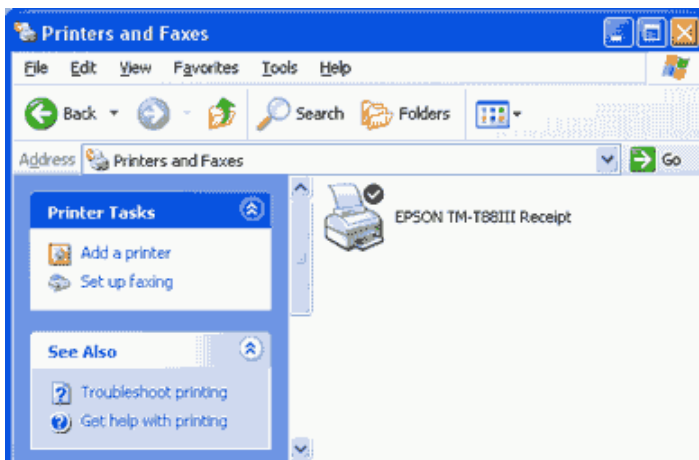


Completing the Driver Installation

The drivers will now be installed with the model and port selected.

This completes the installation of the Epson printer drivers.

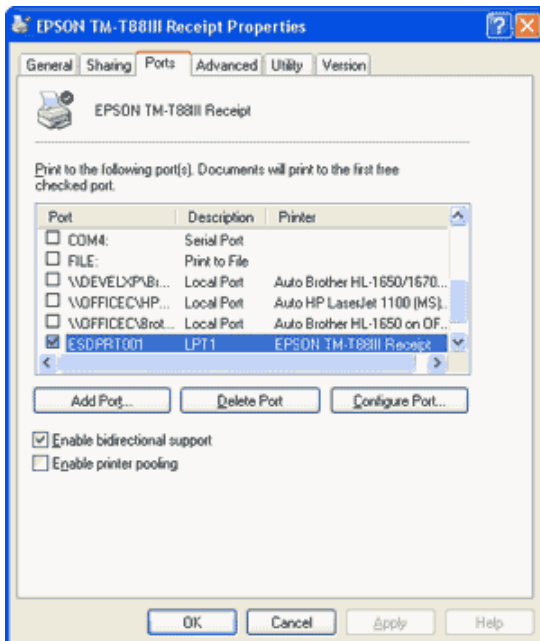
After installing the printer drivers, the printer should be visible in the printers folder of the Windows Control Panel.



Checking the Driver Installation in Windows

If Windows does not recognize the printer when it is attached and powered up, you need to make a few changes in the printer settings in Windows to get it to work with the parallel adapter. Specifically you need to configure the printer port you are using to connect with the printer.

Open the printer in the Windows Printer Folder. Select the Ports Tab. Select the parallel port in use (i.e. LPT1).

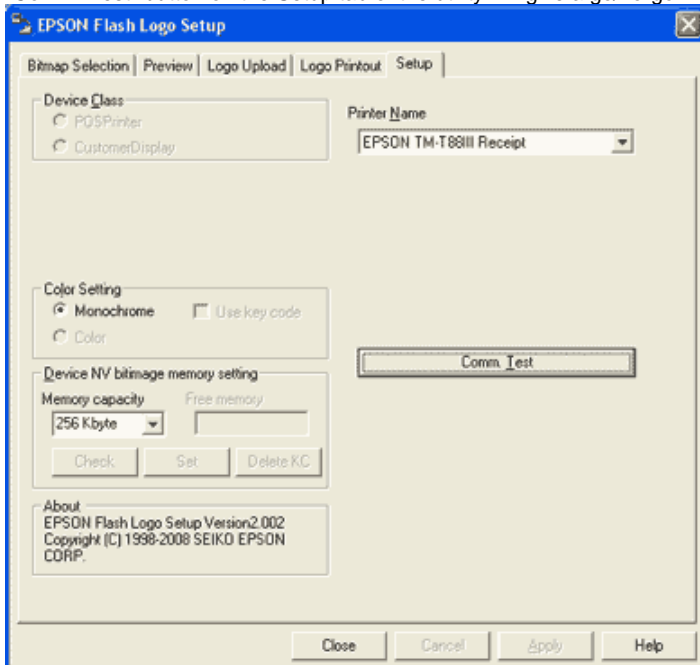


Finally turn off **bidirectional support**, if enabled like above.

## Configuration Utilities to Run on the Computer

### Epson Flash Utility

The Epson Flash Utility is normally installed with the Epson printer drivers. It is used to upload bitmaps to Epson printers, but has a simple communication test which will check for basic connectivity between the computer and the printer. Pressing the "Comm. Test" button on the Setup tab of the utility will give a go/no-go indication of basic connectivity.



### Running the TMNet configuration utility on the Computer

The TMNet utility is not compatible with the parallel interface.

### Testing the Printer

You should now be ready to test the printer by printing some text or by pressing the "Print Test Page" button in the General Tab of the printer properties.

---

## Troubleshooting

### Connectivity Problems, never printed

- The data cable is incorrect. Typically parallel printers need to use a parallel cable.
- The Epson printer driver has not been installed for the parallel adapter and printer in use. Check the cable is plugged into a parallel port on the computer side. On the computer side this is typically a D-shaped connector with 25 holes.
- The printer or the interface card is defective. Confirm printer operation with self-test. Confirm interface card by swapping with another interface card or printer.

### Prints Garbage

- The interface settings are not the same on both the printer and computer. Run the printer self test to show the current settings on the printer. Check the computer side to see that interface is parallel. Settings can be changed on the printer using the DIP switches.
- The printer selected in the software is not correct or the software doesn't support the printer in use.

### No longer prints

- The TM printer is turned off. Turn on the TM printer. Confirm the connection of the power supply unit or the voltage of the commercial power.
- The TM printer is offline. Turn the TM printer online.
- The ERROR LED of the TM printer is on or flashing. Remove the error cause.
- The printing port of the driver on the computer side is not specified correctly. Confirm the driver setting on the computer side.
- The printer is not online in Windows. Check the status of the printer in the Windows Control Panel, the printer should show status as ready. *Tip:* try stopping and restarting the **Print Spooler** from the Services applet of the Control Panel.

### Printing is slow

- There are problems with the computer. Printing speed may go down due to problems with the network system or applications. Run the printer self test to confirm the printer is capable of printing at its normal speed.